



National Capital Diagnostic Imaging supports GP's in the appropriate use of CT scans where clinically indicated.

Please refer to the reference guide if you are uncertain if a CT scan is the clinically appropriate investigation.

As part of our commitment to excellence, NCDI have Radiologists and/or Physicians on site at all major clinics every day.

Should you have any questions regarding the appropriate scan for your patient, please do not hesitate to contact one of our Radiologists at a NCDI Clinic near you.

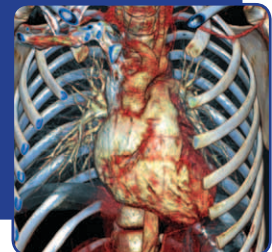
CT remains appropriate for imaging of Head, Heart, Chest, Abdomen, Spine and Extremities.

New Siemens
dual source
**FLASH
SPEED CT**



Lowest possible dose

Introducing the brand new Siemens FLASH SPEED CT to NCDI Deakin at the Canberra Specialist Centre.

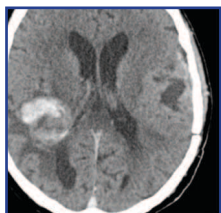


Visit us at www.ncdi.com.au



QUICK REFERENCE GUIDE FOR CT REFERRALS

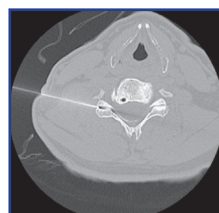
CT remains appropriate for imaging of Head, Heart, Chest, Abdomen, Spine, Extremities, Interventional and Angiography



HEAD

CT

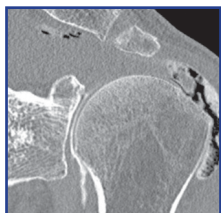
Head injury-bone/brain assessment
Sinus disease
Facial bone #
Temporal Bones – conductive hearing loss
Headache
Stroke Investigation



INTERVENTIONAL

CT

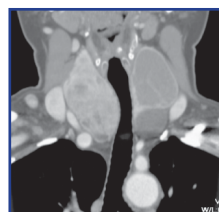
Facet joint injections
Nerve Root / Foraminal Injections
Biopsies
Drainages
Cyst aspirations
Rhyzolysis
Medial Branch Blocks
Epidural Injections



EXTREMITY

CT

Detection of subtle fractures
Work-up of complex fractures
Assessment of surgical bony fusion/
delayed # healing
Bony lesion work-up
Osteochondral defects



NECK

CT

Tumour/Mass assessment
Multi-Nodular Goitre
Tracheo-Malacia
Malignancy and tumour staging

CT Arthrography

Shoulder/Hip

- labral abnormalities
- instability

Elbow

- loose osteocartilaginous bodies

Knee

- meniscal tears / chondral defects
- loose osteocartilaginous bodies



CHEST

CT

Haemoptysis
Trauma
Bronchiectasis/Interstitial Lung Disease (HRCT)
Solitary/Multiple Pulmonary Nodules
Mediastinal Mass
Tumour staging



CT ANGIOGRAPHY

CT

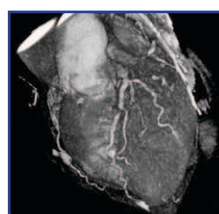
Pulmonary Angiogram - ? PE
Carotid / Vertebral Arteries
COW
Abdominal and Thoraco-Abdominal Aorta
Renal Arteries
Popliteal Arteries
Subclavian Arteries
Aorto-Bifemoral + lower limb run-offs
Aortic Arch
Extremity vessels



ABDOMEN

CT

Lesion assessment / characterisation
Carcinoma staging
Renal colic – CT Urogram
Inflammatory processes
Ascites, lymphadenopathy
Abdominal Aorta Aneurysm
Trauma



CORONARY CT ANGIOGRAPHY (Performed on 128-Slice CT at Deakin)

Possible Coronary Heart Disease
Atypical chest pain, dyspnoea
LV function and mass measurement
Bypass graft patency and stent patency
Symptomatic patients with known CAD
Coronary artery anomalies
Calcium scoring



SPINE

CT

Spinal Canal Stenosis
Radiculopathy
Spondylolisthesis
Assessment of surgical bony fusion
Acute crush # assessment



MRI

MRI is an additional imaging option.

GP – referred MRI is available for:
Knee
Cervical Spine
Thoracic Spine
Lumbar Spine
Brain
Cardiac MRI

MRI scans are limited to specific clinical indications, and are charged at \$320 per region.

Performed at Canberra Specialist Centre,
161 Strickland Cres, Deakin.