

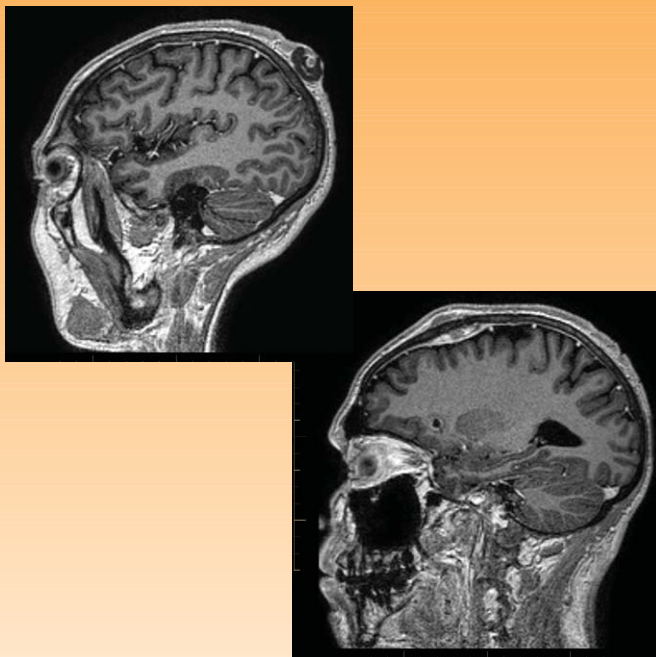
NCDI

CANBERRA'S ONCOLOGY IMAGING PRACTICE

Setting new standards in imaging and service

Oncology MRI

Contrast enhanced MRI of a patient with disseminated melanoma showing not only brain metastases but also calvarial and skin metastases



Service provided at Deakin Specialists Centre

Oncology Nuclear Medicine

Whole body bone scan showing multiple bone lesions



Service provided at Corinna and Civic

Oncology CT

64 slice CT showing lung and soft tissue secondaries of the patient with disseminated melanoma



Service provided at Deakin Specialist Centre,
Corinna and Tuggeranong.