

ARE THERE ANY SIDE EFFECTS?

Tell your doctor if you are pregnant, allergic to iodine and/or any medications.

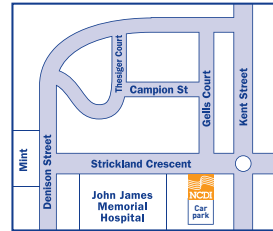
Medication that may be given to you during the examination which will lower your heart rate, may cause you to experience slight drowsiness for up to several hours following the procedure.

The injection of contrast you will receive during your examination may cause you to feel a brief sensation of warmth over your body and a metallic taste in your mouth. These are common experiences. Occasionally transient side effects such as nausea or an itchy rash may occur.

If you have any further questions please do not hesitate to contact our practices.



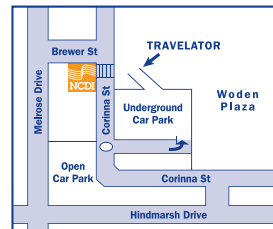
Coronary CT Angiogram is performed at Deakin



CANBERRA SPECIALIST CENTRE

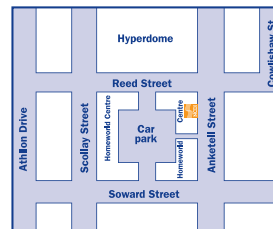
161 Strickland Crescent,
Deakin ACT 2600
Ph: 6124 1900

Other NCDI sites:



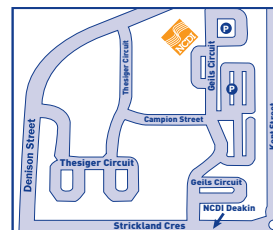
CORINNA CHAMBERS

36-38 Corinna Street,
Woden ACT 2606
Ph: 6214 2222



TUGGERANONG

Suite 10a, Homeworld Centre
Anketell Street,
Tuggeranong ACT 2900
Ph: 6293 2922

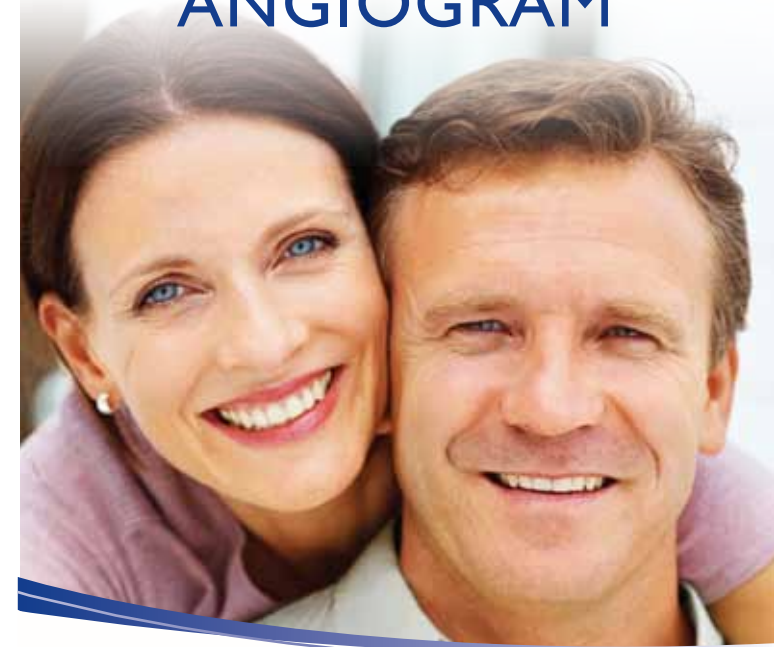


GEILS COURT

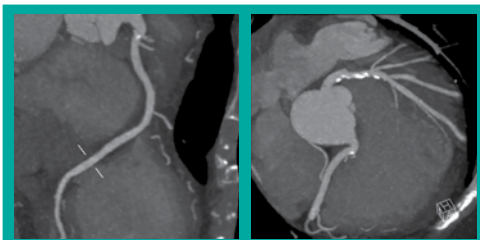
39 Geils Court,
Deakin ACT 2600
Ph: 6122 7878

Please bring your referral and any previous x-rays with you on the day of your examination.

CORONARY CT ANGIOGRAM



Cardiac CT Scanning uses an advanced, low dose x-ray system and a computer to obtain detailed images of the heart



3D reconstruction from a Coronary CT Angiogram

WHAT IS CORONARY CT ANGIOGRAPHY?

Coronary CT Angiography (CTA) is a scan of the heart which shows coronary arteries and any associated abnormalities.

Using a non-invasive technique, Coronary CTA is performed to visualise the coronary arteries and to identify narrow, blocked, enlarged or malformed arteries without the need for conventional angiography. This enables your doctor to determine appropriate treatment, if required.

PREPARATION

This scan requires strict preparation, so please follow.

Consult your GP about what medications you can take prior to and after the scan. Please take your usual medication (unless otherwise instructed) with a little water. Bring a list of your current medications with you to the appointment.

Do not eat for 4 hours prior to your examination and only small amounts of water during this time.

If you are over the age of 60 years or have a history of kidney problems, you will require a blood test within 30 days prior to your examination to evaluate your kidney function. A copy of these results should be brought with you on the day of your examination.

12 hours prior to your scan, do not have anything that will increase your heart rate (including caffeine, cigarettes and certain medications and foods).

Upon arrival at our clinic you will register with reception and prepare for the scan. Please bring your referral and any previous films with you.



Our new CT System utilises the latest dual source “flash” technology to produce highly detailed images of the heart. This means a **low radiation** dose for the patient.

DO I HAVE TO HAVE AN INJECTION?

Yes, You will need to be given an injection of contrast to make the picture clearer.

PROCEDURE

A nurse will ask you to change into a gown for the procedure and will take your blood pressure and heart rate. You may be given medication to lower your heart rate for the scan.

You will need to wait for approximately 15-30 minutes following the examination to ensure there are no ill effects from the medication to lower your heart rate or the contrast. Side effects are very rare. The physician will see you after the study.

HOW LONG WILL THE PROCEDURE TAKE?

Although the scan time is brief, you should allow approximately 2 hours for the entire procedure. This allows for adequate preparation prior to scanning.

Multiple images are acquired and a detailed analysis will be performed later by the attending radiologist/physician. This report will be made available to your doctor.

We advise that someone drives you home following the examination as you may feel drowsy from the medications given to you during the examination.

Resume your normal diet. Fluids are encouraged to assist flushing the contrast from your body.

