

MRI

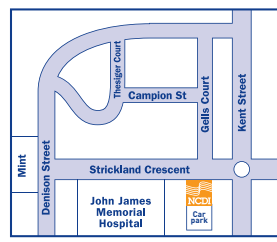


MRI uses strong magnetic fields, radio waves and a powerful computer to produce exceptional images of body structures.

If you have any further questions please do not hesitate to contact our practices.



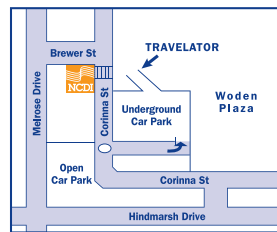
MRI is only available at Deakin.



CANBERRA SPECIALIST CENTRE

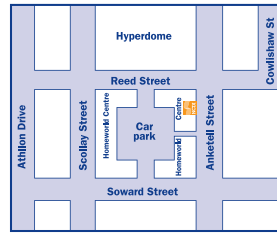
161 Strickland Crescent,
Deakin ACT 2600
Ph: 6124 1900

Other NCDI Sites:



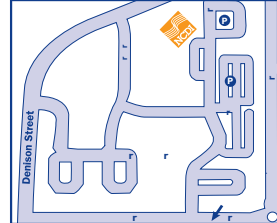
CORINNA CHAMBERS

36-38 Corinna St,
Woden ACT 2606
Ph: 6214 2222



TUGGERANONG

Suite 10a, Homeworld Centre
Anketell Street,
Tuggeranong ACT 2900
Ph: 6293 2922



GEILS COURT

Suite 1, 39 Geils Court,
Deakin ACT 2600
Ph: 6122 7878

Please bring your referral and any previous x-rays with you on the day of your examination.

WILL I REQUIRE AN INJECTION?

Most MRI tests will not require a contrast injection, however in certain circumstances it may improve the accuracy of the scan. This injection (gadolinium solution) is usually into an arm vein. It is not like the contrast used in x-ray examinations.

If sedation is required it is injection into a vein through thin plastic tubing in the elbow area or the back of the hand.

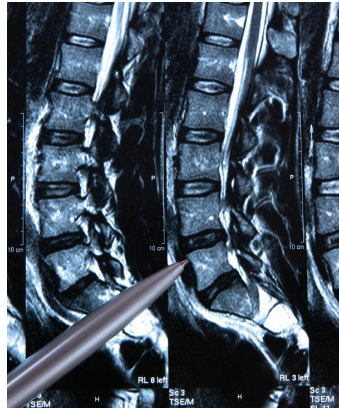
WHAT IF I'M PREGNANT?

If you are pregnant, or could be pregnant at the time of your appointment, please contact us prior to that time so that the situation can be discussed with your referring doctor. MRI is usually avoided in the first trimester of pregnancy unless the diagnosis cannot wait and your doctor considers MRI to be the best investigation.

WHEN WILL I GET MY RESULTS?

MRI investigations contain specialised and complex information. A large number of images are produced and review of these

images may take several hours. Unless the examination is urgent, we suggest you return later to collect your films.

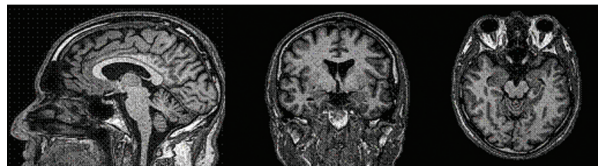


Sagittal MRI image of the lumbar spine

WHAT IS AN MRI?

Magnetic Resonance Imaging (MRI) uses a very powerful magnet and radio-frequency to collect signals that are then processed by a computer to form a picture of the body part being studied. Images line up like slices from a loaf of bread.

MRI gives a detailed picture of the soft tissue of the body e.g. Muscles, ligaments, brain tissue, discs and blood vessels.



MRI of the brain

WHO CANNOT HAVE AN MRI SCAN?

Anyone with a pacemaker, clips in the brain, cochlear implants or metal chips in their eye must NOT go near such a powerful magnet. Most metal put in at surgery (hip replacements and metal rods) is safe.

If you have worked in the welding industry or have ever had metal fragments in your eye then you MUST inform us so that you can have eye x-rays to ensure that no fragments remain. It is imperative to have any of these removed prior to the scan.

PREPARATION

In most cases there is no special preparation and you can eat and drink normally.

There are several techniques that the technologists will employ to assist you. However, if sedation is required you will need to fast 4 hours prior to attending and be escorted by someone who will accompany you home. You will not be permitted to drive home under any circumstance and will need to remain under observation for some time after the completion of the scan.

If you are taking any pain medication, please do so such that its peak action corresponds to the intended scan time. Other medications should be taken as normal.

Do not wear eye make-up or hairspray if you are having a head scan.

Before your examination you will be asked to fill out a questionnaire and sign a consent form.

PROCEDURE

You will be asked to change into a hospital gown to avoid any metallic objects being inadvertently taken into the scan. You will be provided with a secure site to store your valuables including watch and wallet. Any credit cards taken into the scanner will have their magnetic strips wiped.

For some examinations your heartbeat may need to be recorded by placing small patches and wires on your back and chest.

Prior to the scan beginning a special signal receiving coil may be placed around your knee, shoulder or abdomen (depending on the nature of your examination).

You will be asked to lie on a movable table which positions the body part to be imaged in the centre of the tunnel. During the examination you will hear a series of loud knocking noises and may feel slight vibration. Music or earplugs will be provided.

It is important that you remain as still as possible during the scan otherwise images taken will appear blurry. Constant communication, both verbal and visual is maintained throughout the scan to ensure that you are comfortable and updated on the progress of your examination. If at any time you become uncomfortable, a buzzer enables you to communicate with the technologist.

MRI is painless and because it takes between 30 and 40 minutes per examination you may become a little uncomfortable lying still for that period.

National Capital
Diagnostic Imaging



www.ncdi.com.au