



Canberra's home of the 64 Multi-slice CT Scanner Technology

NCDI Deakin is proud to announce the installation of the first 64 slice scanner in Canberra.

64 Multidetector CT Technology

The state-of-the-art Siemens Sensation Cardiac 64 CT scanner surpasses all existing CT technology. It has the highest spatial resolution and fastest speed of any commercially available CT scanner.

This translates into quicker and more detailed examinations allowing a reduction in dose and amount of iv contrast required. Patient comfort is improved, with shorter scan times and breath holds of 15 seconds or less for most studies.

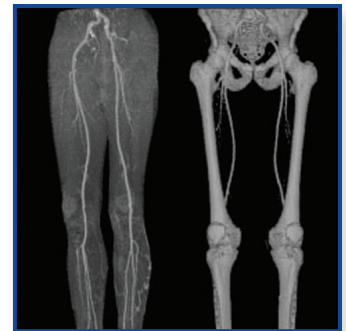
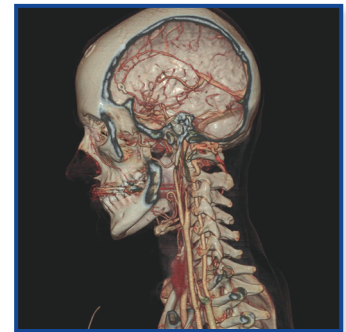
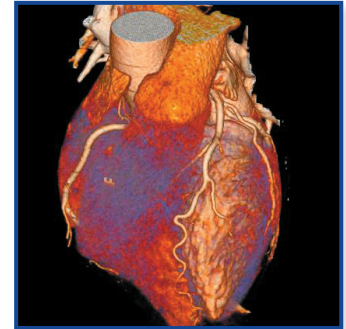
64 Slice Clinical Results

Diagnostic angiography of all body areas can now confidently be performed by a non-invasive technique. CT angiography does not require an arterial puncture and avoids the need for admission as a day case or for overnight stay.

Coronary artery imaging can now be performed with a high degree of accuracy. Recent studies have been published demonstrating a good correlation between 64 slice CT and coronary angiography.

Renal pulmonary, carotid and leg arteries, in addition to the aorta, can be imaged with outstanding clarity.

CT guided procedures such as spinal injections and biopsies can be quickly and accurately performed with real time fluoroscopic CT imaging.



National Capital Diagnostic Imaging

A member of the I-MED Network

Corinna Chambers
Corinna Street
Woden ACT 2606
Ph: 6282 2888
Fax: 6281 4261

Canberra Specialist Centre
Strickland Cres
Deak ACT 2600
Ph: 6124 1900
Fax: 6124 1950

Homeworld Centre
Anketell Street
Tuggeranong ACT 2900
Ph: 6293 2922
Fax: 6293 1212

Derwent House
28 University Avenue
Canberra City ACT 2600
Ph: 6247 5478
Fax: 6257 7127



National Capital Diagnostic Imaging: home of 64 slice Imaging

Vascular Imaging: Pre and Post Treatment

64 and 16 slice Multidetector (MDCT) introduce a new level of vascular imaging. The isotropic/near isotropic voxels, rapid acquisition, multiplanar presentation, sophisticated post processing abilities makes imaging more advanced. This is now available at our Deakin and Tuggeranong rooms.

Each study contains a CD-ROM to enable you to review the study interactively.



Figure 1: MDCT arteriogram subclavian artery aneurysm

Abdominal Aorta Anurysm

Unrivalled ability to image aneurysms and dissections prior to surgery.



Figure 2 : Volume rendered image of aortic aneurysm : Relationship to renal arteries clearly shown



Fig 3: Volume rendered image of infra-renal aneurysm showing renal artery and aortic bifurcation relationship

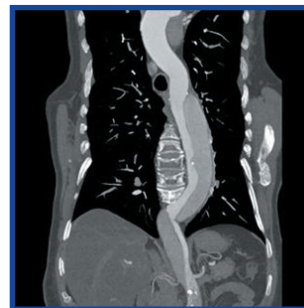


Fig 4 : Dissecting thoracic aorta showing true and false lumens



Fig 5: Post surgery cross-over graft showing patency and relationship to other arteries.

**64/16/4 MDCT now available at Deakin Specialist Centre, Tuggeranong and Corinna Chambers.
For bookings and further information please contact NCDI on 02 6124 1900**