

ARE THERE ANY SIDE EFFECTS?

The OPG and cephalometrogram are basic diagnostic methods in modern dentistry and orthodontics. The benefits from these x-rays far outweigh the theoretical small risk of side effects. The amount of radiation required is extremely small with the modern equipment used in our practices.

HOW LONG WILL THE PROCEDURE TAKE?

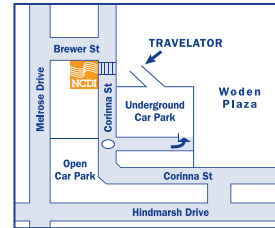
An average examination takes around 15 minutes to complete. The pictures are then checked by the radiologist who writes a brief report. Your own dentist will later assess details of the dentition.



If you have any further questions please do not hesitate to contact our practices.

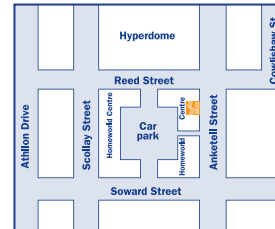


Dental X-Rays are performed at Woden & Tuggeranong:



CORINNA CHAMBERS

36-38 Corinna St,
Woden ACT 2606
Ph: 6214 2222



TUGGERANONG

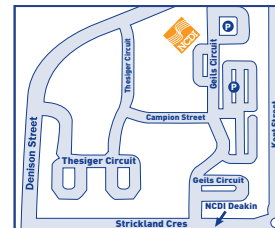
Suite 10a, Homeworld Centre
Anketell Street,
Tuggeranong ACT 2900
Ph: 6293 2922

Other NCDI sites:



CANBERRA SPECIALIST CENTRE

161 Strickland Crescent,
Deakin ACT 2600
Ph: 6124 1900



GEILS COURT

39 Geils Court,
Deakin ACT 2600
Ph: 6122 7878

Please bring your referral and any previous x-rays with you on the day of your examination.

DENTAL X-RAY



Dental X-rays are pictures of the teeth, bones, and surrounding soft tissues to screen for and help identify problems in these areas

WHAT IS AN OPG?

OPG is short for orthopantomogram, which is an x-ray picture showing all the teeth on a single film. The OPG is quite different to the small films taken by dentists which provide a detailed close-up look at problems with individual teeth. An OPG film may be requested by your dentist for a wide variety of reasons, but is most commonly used for planning orthodontic treatment. OPG's can also show other problems in the jawbone (mandible) or in the temporomandibular joints (TMJ's) which connect the jawbone to the head.

WHAT IS A LATERAL CEPHALOMETROGRAM?

A lateral cephalometrogram (or 'lat ceph' for short) is a side-view x-ray of the face showing the bones and facial contours in profile on a single film. Cephalometrogram films are used in the diagnosis of orthodontic problems and for planning treatment.

PREPARATION

No preparation is required. It is important to note that patients will be asked to remove earrings and necklaces. Hair should be free of hair accessories.

PROCEDURES

OPG and cephalometrogram films are taken with an x-ray machine designed just for these two examinations. First, the technician will ask you to stand with your head against the machine, and will adjust the height until it is comfortable.

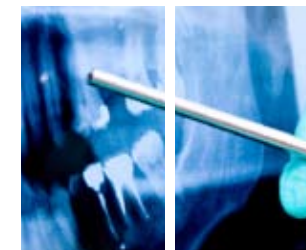
Patients under the age of 16 must be accompanied by a guardian.

OPG FILM

For an OPG film you will be asked to bite gently on a peg which fits between the front teeth. For each patient this peg is covered with a disposable plastic sleeve so there is no risk of infection. As the picture is taken, the machine rotates slowly around you and it is essential to keep as still as possible. Even the slightest movement can blur the image, requiring the x-ray to be repeated.

CEPHALOMETROGRAM

For the cephalometrogram, a pair of coneshaped plastic supports are gently positioned in each ear, rather like a pair of headphones. This aligns both ears to ensure that an exact side view of the face is obtained.



An OPG film may be requested by your dentist for a wide variety of reasons, but is most commonly used for planning orthodontic treatment.